


## TotalTrax EquipCommand Workstation Install

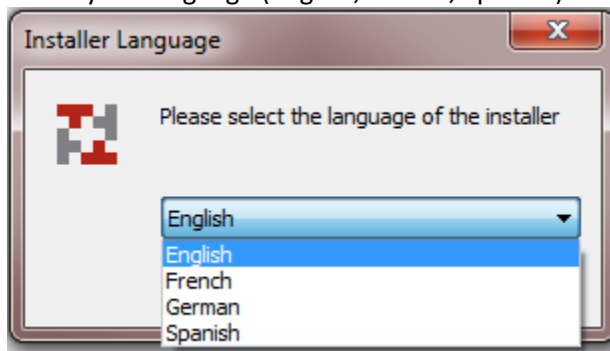
EquipCommand 3.2.6 and later

1. To begin, double click the Setup.exe icon. The installer will be called SetupEquipCommand3xx.exe or SetupEquipCommandWorkstation3xx.exe.

 setupEquipCommand\_360.exe

 setupEquipCommandWorkstation\_36x.exe

2. Select your language (English, French, Spanish).



3. To accept the terms of the license agreement, click the I Agree button.



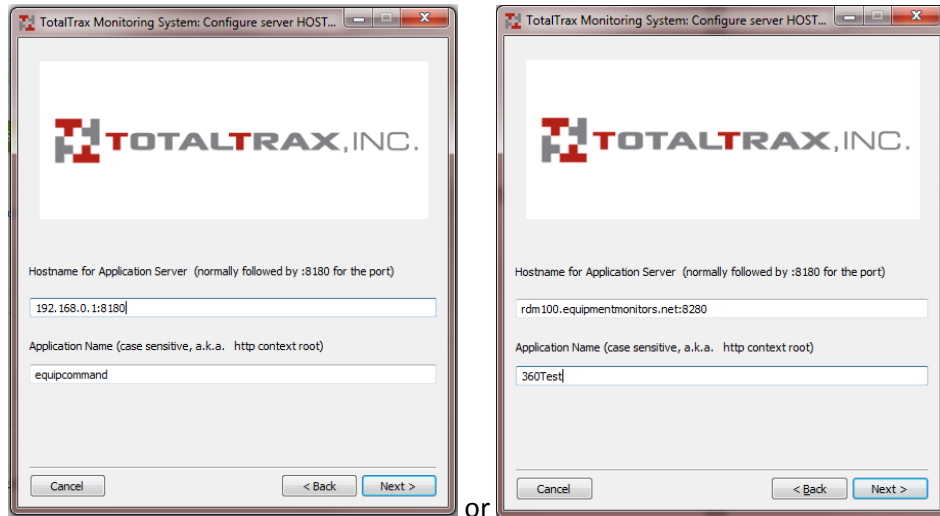
4. The full installer will present an option to select Server or Workstation. If using the full installer, select Workstation only.



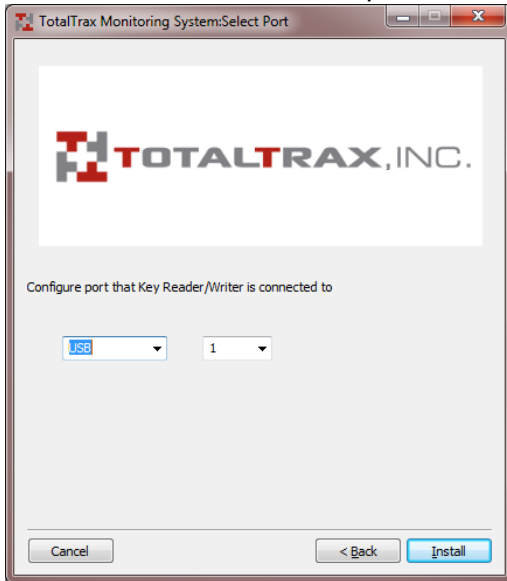
5. Select the correct install path.



6. Set the hostname, port, and application name. Either the IP Address or Hostname can be used.
- If this is a local install, the port will almost always be 8180.
  - If this is 3.4.4 and earlier, the Application Name will be "shockwatch"
  - If 3.5.0 and later, the Application Name will be "equipcommand"
  - If this is a Remotely Hosted site, the Address will be the address and port of the RDM server that has been provided, and the Application Name will be the RDM site name



7. Select the Key Reader type:
  - a. If USB, leave the port as "1"
  - b. If Serial, select the correct COM port number
  - c. Parallel is almost always "1"



8. Click the INSTALL button to complete the install. This will create a link on the desktop using the information in step 6, install the Key Reader add-on for the web browser, and install the 32 bit iButton reader driver. **NOTE: If you are running a 64 bit addition of Windows, see the Special Instructions section.**

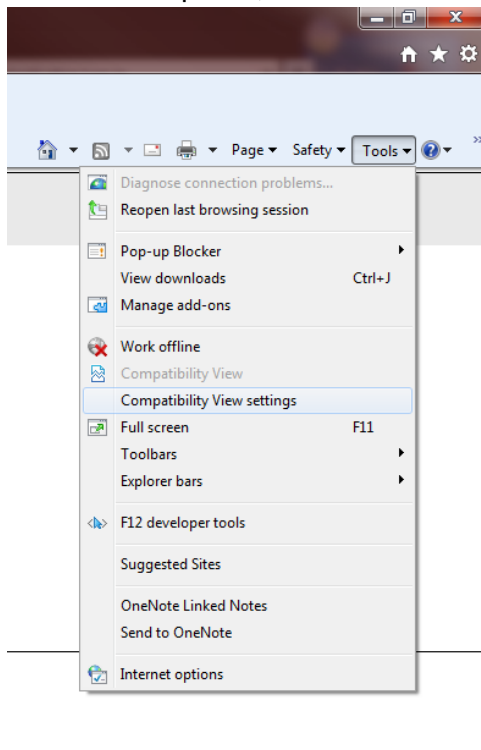
## Special Instructions

**64 Bit Windows** – Windows 64 bit uses a different driver for the USB iButton reader. This driver can be downloaded from the manufacturer site here. There are no special instructions to install this driver, the default menu selections will work.

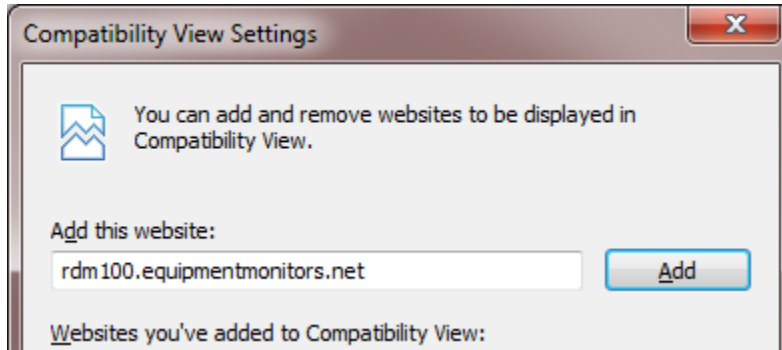
[http://www.maximintegrated.com/products/ibutton/software/tmex/download\\_drivers.cfm](http://www.maximintegrated.com/products/ibutton/software/tmex/download_drivers.cfm)

**Internet Explorer 9** – IE 9 is designed to display web pages in the newer HTML 5 language. For sites written in HTML 4 there is an option to display in Compatibility Mode. Compatibility View Settings allows users to define which sites will always open in Compatibility Mode. To use this feature:

1. In Internet Explorer, select Tools > Compatibility View Settings.

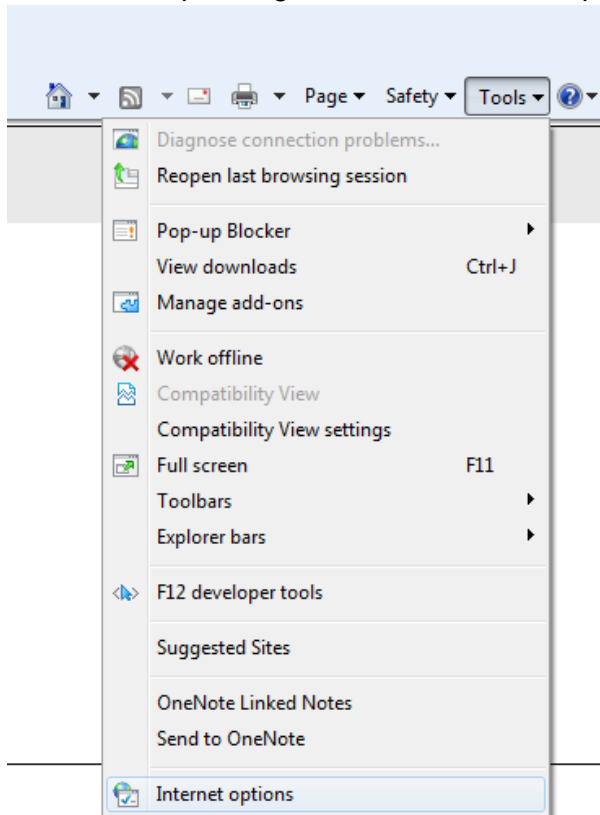


2. Add the site address to the Compatibility View list. If you have browsed to the site, then the bar will auto fill with the currently loaded site. Click Add.

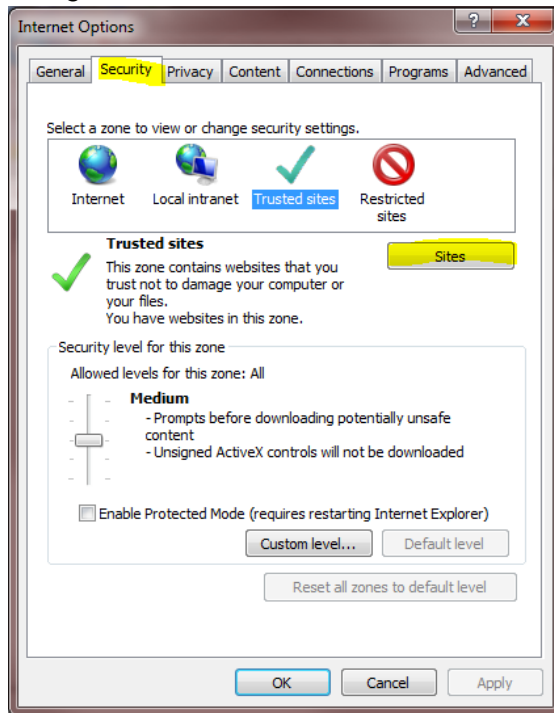


**ActiveX Browser Add-On** – EquipCommand uses an ActiveX web browser plugin to send the key reader or badge reader data from the workstation to the server through the web browser. ActiveX plugins are small programs that are used in Web pages, but some malicious websites use these to install malicious software. For that reason, most companies block the execution of ActiveX plugins unless they are explicitly allowed. To allow the EquipCommand plugin and prevent it from being blocked in the future, follow these steps. Note, these steps are not necessary in Mozilla Firefox.

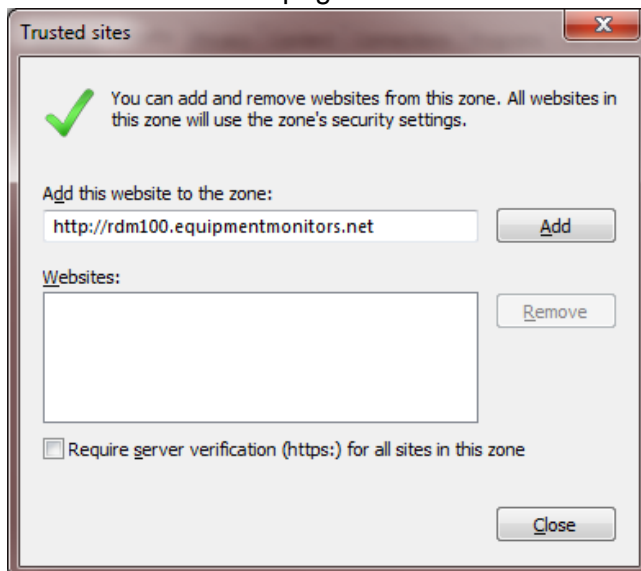
1. In Internet Explorer, go to Tools > Internet Options.



2. Click on the Security Tab at the top, click on Trusted Sites, then click the Site button on the right.



3. Enter the site address in the bar at the top. If you are currently viewing the TotalTrax site, the address will auto populate. Also, uncheck the box at the bottom. This allows you to add non HTTPS:// pages.



4. Click ADD , and then CLOSE.